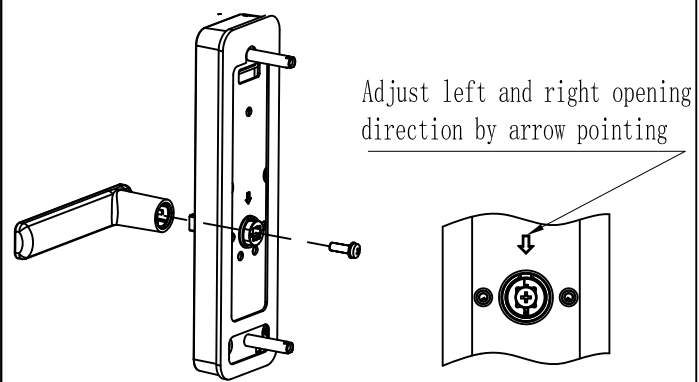


1. Front panel 2. Back Panel 3. Lock body
4. Battery Cover 5. Square shaft 6. Panel Fasteners

- Installation steps:
1. Check whether the fittings are complete (see the packing list above), and install the battery, try whether the door lock function is normal.
 2. Install the lock body (3) on the door fan. (Do not use pull nails to install and fix).
 3. Insert the square bar (5) into the front panel and determine the position of the spring clip to the hole. Be careful not to pull the square axle hard to avoid permanent damage to the spring.
 4. Insert the front panel into the lock body.
 5. Fix the wire connection between the front panel (1) and the rear panel (2) and fix it with two panel screws (6).
 6. Install the door button box and door button plate.
 7. Use the key to check whether unlocking is normal.
 8. Install batteries, use password to unlock properly, lock tongue, handle, etc. rebound smoothly.



- Turn the handle left and right to adjust the steps:
1. Unscrew the handle screw with a cross screwdriver.
 2. Remove the handle and turn it in the desired direction.
 3. Retighten the handle screw.
 4. The key head points to the direction needed for adjustment.